



Welcome to Pitton Primary School

Pitton Primary is a small, family-oriented school with ambitious ideas for every child. We are dedicated to providing a holistic learning experience where children are nurtured, inspired, and feel safe and supported by every member of our community. Our unique setting fosters a strong family environment that promotes academic, emotional, spiritual, and social growth, fulfillment, and achievement.

Our vision, "Life in all its fullness" (John 10:10), is rooted in our core values of **Friendship, Family, and Fulfilment.**

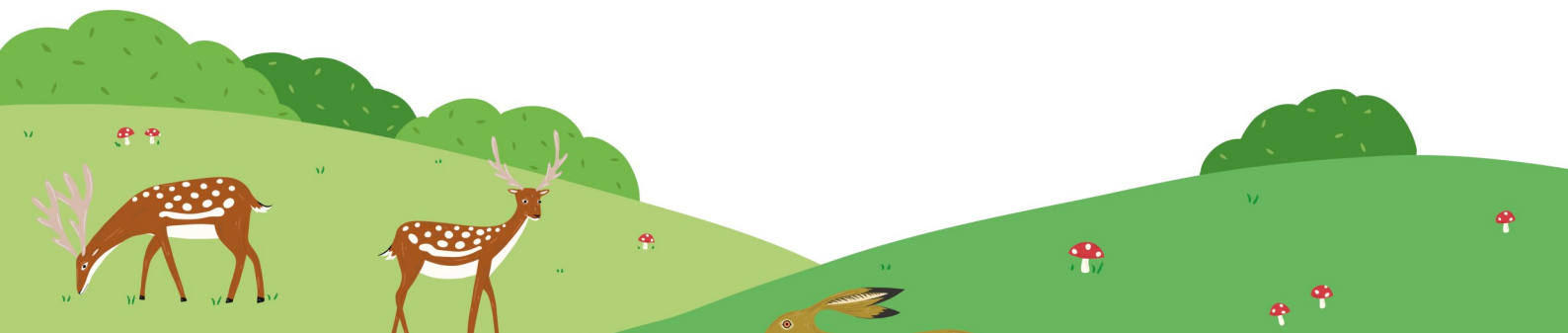


A growth mindset is at the heart of our community, encouraging us all to motivate and support each other, tackle new challenges, persevere, and stretch ourselves. We are committed to ensuring every child feels unique, valued, and integral to our school community.

Our Learning Environment and Facilities

Beyond our spacious classrooms and hall, our extensive grounds offer an ideal place for your child to thrive. These include:

- Two sport pitches
- A gazebo
- A Hygge Hut, inspired by the Nordic Teaching model, emphasizing inclusivity, high academic standards, and collaboration.
- An outdoor amphitheater
- A secluded garden area
- A trim trail
- Our own access to the Clarendon Way, enabling walks to the forest and exploration of the historic Clarendon Palace ruins.
- The school also benefits from an orchard and a Hygge Hub.



Our Dynamic Curriculum and Learning Approach

At Pitton CE Primary School, our curriculum is designed to build on children's prior learning, offer real-life experiences and challenges, and encourage them to develop their unique talents, interpersonal skills, resilience, and become creative, critical thinkers. It ensures the highest possible personal development in all facets: spiritual, moral, cultural, mental, and physical.

Our curriculum is based around an enquiry-led pedagogy, introducing 'States of Being' to empower learners. Subjects are taught through these 'States of Being', including:

- Authors, Readers, and Writers
- Mathematicians
- Engineers (Computing and DT)
- Athletes (PE)
- Musicians
- Geographers
- Historians
- Scientists
- Artists
- Philosophers (RE and PSHE)

We use a range of schemes to support our curriculum implementation, such as White Rose for Maths and Little Wandle for Phonics.



Class Structure



Our mixed year group classes offer numerous benefits, fostering social, emotional and academic growth in our students.

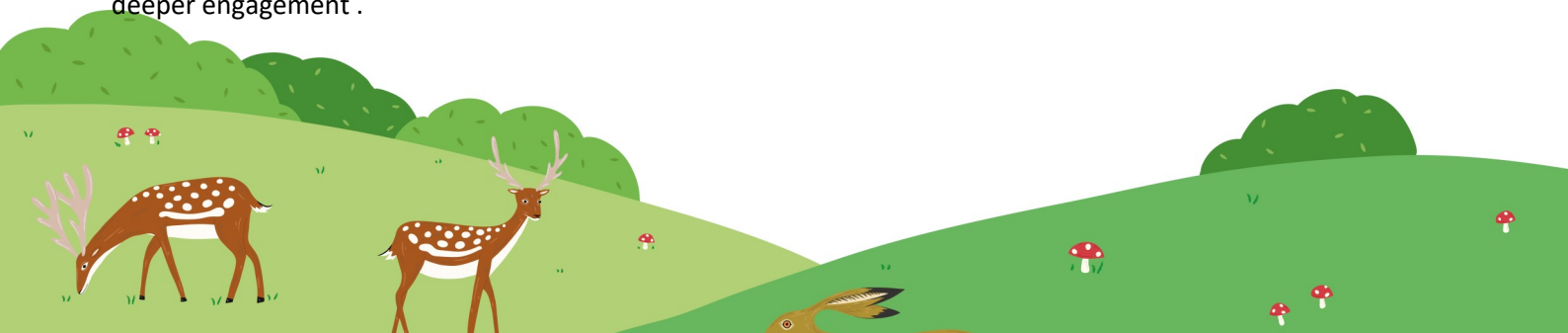
Below are just a few examples of these:

They **create opportunities for older pupils to develop leadership and nurturing skills by mentoring their younger peers, while the younger students benefit from observing and learning from older, more experienced peers.**

Enhanced social skills—children develop relationship with a wider range of peers and learn to collaborate effectively with those of different ages and skill levels. This also **improves communication skills** as they model more advanced language and communication skills.

Sense of community—our mixed age classroom creates a sense of family and belonging as older and younger students support and care for one another.

Deeper Learning—Exposure to diverse perspectives from older and younger peers leads to richer discussions and deeper engagement .



Homework and Assessment

We believe homework is a valuable part of the curriculum, extending challenge and maximizing the effect of school teaching. We strive to make it manageable, meaningful, and enjoyable for both children and parents.

- All children are encouraged to take home a reading book to share.
- Wrens (R/Y1) have spellings and tricky words to learn.
- Hawks (Y2/Y3) have weekly spellings and 20 minutes of either Mathematics or English each week.
- Kites (Y4/Y5/Y6) have approximately 1 hour of homework in English and Mathematics per week, plus some topic work each term, multiplication tables, and weekly spellings.

Topic/project work is given once a year to all pupils and displayed in the corridor.

Assessment is a continuous process, from a child's entry into school until they leave. Teacher assessment is ongoing and informal, checking the effectiveness of learning. Key Stage assessments are conducted, including SATs at Key Stage Two (Year 6), which are externally set and marked.

Our positive marking strategies highlight what pupils know and can do, using House Points, stars, positive comments, and public acclaim. Good work is shared within classes and with the Headteacher .



Broader Development and Extra-Curricular Activities

Pupils' broader development is supported through a carefully planned curriculum from Reception onwards. They learn to share and play collaboratively, understand healthy lifestyles, and appreciate periods of reflection to think deeply and 'be honest' with themselves. Students also develop confidence through positions of responsibility like playleaders and house captains, and explore their talents through activities like gymnastics and football.

We offer a range of extra-curricular activities, including but not limited to:

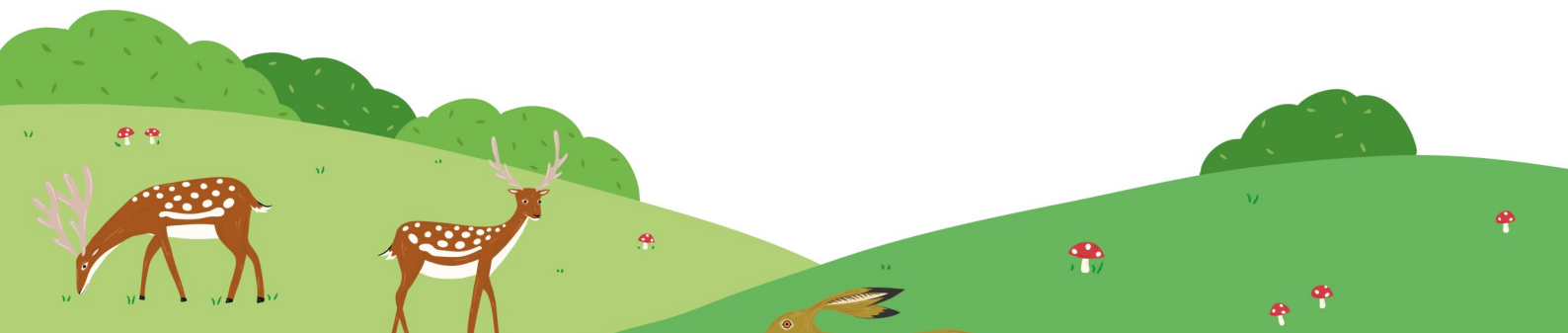
- **Dance:** Provided by Starcast Performing Arts School & Dance Academy for all pupils in Rec-Y2 and Years 3-6, with three dance shows annually.
- **Football:** A very popular club provided by Astrella for all pupils in Year 2-6.
- **Netball:** Run 'in-house' for Years 4-6, participating in the Salisbury Netball league and tournaments.
- **Astellra Sport:** After-school clubs running various sports like hockey, tennis, golf, and cricket for Rec-Y2 and Y3-Y6.



Inclusion and Support

We provide appropriate educational challenge and support for all children, including those with special educational needs or disabilities (SEND). Teachers provide suitable activities to assist development within the class, and the school benefits from a Special Educational Needs Co-ordinator (SENCo) and other outside agencies. We follow the SEND Code of Practice, keeping parents informed and involved.

We are committed to helping all pupils maximize their potential, both academically and socially, including those who display giftedness. We maintain a register of children identified as gifted and talented in various subjects, ensuring all children have opportunities to learn and succeed. Some pupils also attend AGT courses at secondary schools and other external locations.



School Life & Practical Information

Food: At lunchtime, children can bring a packed lunch or enjoy hot school meals provided by Clever Chefs, which are free for Reception to Year 2 pupils. All pupils under five are entitled to free school milk through 'Cool Milk'. A healthy snack is provided for all KS1 pupils. We are a completely nut-free school.



Friends of Pitton School (FOPS): FOPS is our active and supportive parents' organization, organizing events to raise money for the school. Events include cake sales, a Christmas Fair, an Easter Egg Hunt, and a July campout, fostering a strong school community. FOPS funds resources for Golden Time activities and has supported new smart boards and transport for the pantomime. They also run a regular pre-loved uniform stall. You can find them on Facebook or email friendsofpittonschool@gmail.com.



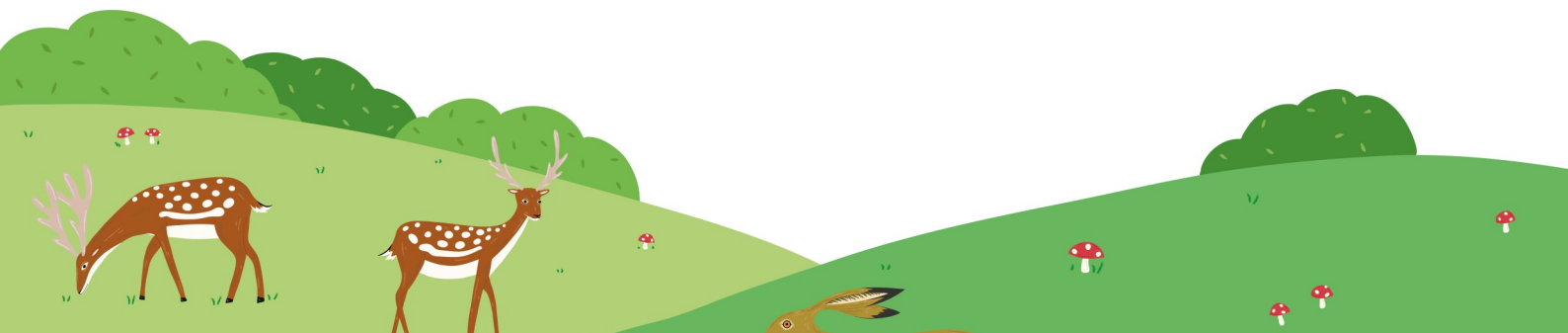
School Uniform: Our uniform promotes pride, community, and belonging, identifies children with the school, is practical, smart, and designed with health and safety in mind. Most items do not require logos, and we have a well-stocked second-hand uniform stall to promote affordability. Full details are on our website.

Wrap-Around Care: Our OFSTED 'Outstanding' wrap-around care offers a Breakfast Club from 8 am daily and an After-School club until 5:30 pm, Monday-Thursday. Both clubs are very popular, with over two-thirds of our pupils attending weekly, benefiting from a friendly, supportive atmosphere and a wide range of activities including crafts, games, drama, music, and outdoor play. Homework support and reading/spelling practice are also available. Contact Iwona on 07810 120206 for more information.

Governors: Our Governors act as a board of Directors, with the main aim of maintaining and improving the school's quality of education and standards of achievement. This includes implementing government policy, encouraging high standards, interviewing staff, deciding the school budget, and monitoring our Christian Vision. Governors are comprised of the Head Teacher, Staff, Parents, Foundation Governors appointed by Salisbury Diocese, and Community Governors appointed for particular skills.



A Message from Our Chair of Governors, Mrs. Judith Lewy: "As Chair of Governors, I am immensely proud and privileged to welcome you to Pitton Primary School. Governors have a strategic role within the school and we aim to ensure that every child is educated for life in all its fullness." She invites prospective families to visit: "The best way to see our school is through the eyes of the children for they are our best ambassadors. Please do come and visit us at the earliest opportunity."



A Message from Our Headteacher, Emma Wilkinson:

“At Pitton CE Primary School we value Friendship, Family and Fulfilment. We are dedicated to providing a holistic learning experience where children feel safe and supported by every member of our community. Our small setting provides a strong family environment which promotes growth, fulfilment and achievement academically, emotionally, spiritually and socially.

Growth mind-set is at the heart of our community, involved in every aspect of school life. We motivate and support each other to tackle new challenges, persevere and stretch ourselves.

We are committed to ensuring every child feels unique, valued and integral to our school community.”



Contact Us

We welcome anyone interested in our school to book a tour. We are happy to accommodate tours all year round.

Please contact the office using the email admin@pitton.wilts.sch.uk or phone 01722 712322.

