

OUR LEAD STATE OF BEING IS:
SCIENTIST



Term 1



OUR SUPPORTING STATES OF BEING ARE:
ARTIST, GEOGRAPHER AND ENGINEER

This Term's Enquiry Question is: Where does the darkness come from?

light night
dark day

absence

shadow

opaque

transparent

translucent

source

transparent

Arctic and Antarctic circles

KEY VOCABULARY

Milestone 1

Learners understand that light reflects from surfaces and that darkness is the absence of light. They can gather, record and present data collected.

Milestone 2

Learners recognise that light, whilst useful, can be dangerous and that there are ways to protect our eyes. They can identify the position of the Arctic and Antarctic Circles.

Milestone 3

Learners can find patterns in the way that the size of shadows change and understand that shadows are formed when the light from a light source is blocked by an opaque object.

Milestone 4

Learners are improving their mastery of drawing and can perform their story with confidence

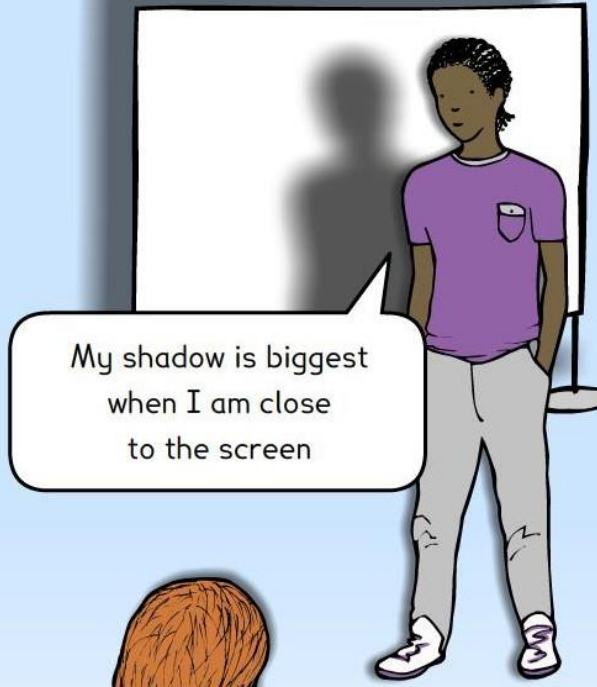
OUR LEAD STATE OF BEING IS:
SCIENTIST



OUR SUPPORTING STATES OF BEING ARE:
ARTIST, GEOGRAPHER AND ENGINEER



*Where does the
darkness come from?*



My shadow is biggest when I am close to the screen

Your shadow is biggest when you are close to the lamp



The shadow is the same no matter where you stand



?



Standing close to the lamp makes your shadow clearer

