



Pickwick Papers – Edition 26 – Term 4 – Apr 2025

Welcome from James Passmore (CEO)

It's amazing to think we are two-thirds of the way through another exciting academic year!

I hope you are enjoying the warmer weather and lighter evenings, and had fun on World Book Day!

Once again, I would like to say a huge thank you to all the staff, children, parents and governors who work so hard to make our schools such special places.

Have a wonderful Easter and well-deserved break. Relax and rest well, and enjoy time with your families...



New library and learning spaces at Queens

We are thrilled to announce the completion of a significant project at Queens Crescent School: the extension of the mezzanine to create a number of rooms, including a wonderful new library and an intervention room. This initiative aims to promote reading for pleasure and provide additional areas for the children to enjoy learning.

To ensure accessibility for all, a lift has been installed, making the new area inclusive and welcoming. The creation of this fantastic resource has been a collaborative effort, involving a great deal of work from both Queen's Crescent staff and Pickwick's facilities and premises team. Their dedication was evident as they gave an immense amount of their time over the summer holidays, weekends and evenings to deliver this project.

The children are already making the most of their new library, proudly exploring and enjoying the new books.

This new space is not just a room filled with books; it is a gateway to imagination, knowledge, and endless adventures! Happy reading everyone.



Train to Teach with us

Do you know someone who is keen to become a teacher? We can help! We have partnered with the [OTT SCITT network](#) to train teachers through Pickwick.

We have training hubs in Corsham (North Wiltshire) and Salisbury (South Wiltshire) and our strong network of schools enables us to provide school placements which are local to trainees. We offer primary and secondary, and both full and part time routes. Find out more [here](#).

Parent Survey – click link

Thank you very much to all of you who have responded to our Trust-wide parents' survey. We are keeping the link open until 30 April – please share your views and thoughts with us!



Please help by using the QR code or click on the [link](#) to our survey.



Trust Growth – new schools update

Following on from my communication to you in the last edition of Pickwick Papers, I am delighted to inform you that three schools formally joined the Trust on 1 April 2025 and we are on track to welcome three more on 1 May 2025.

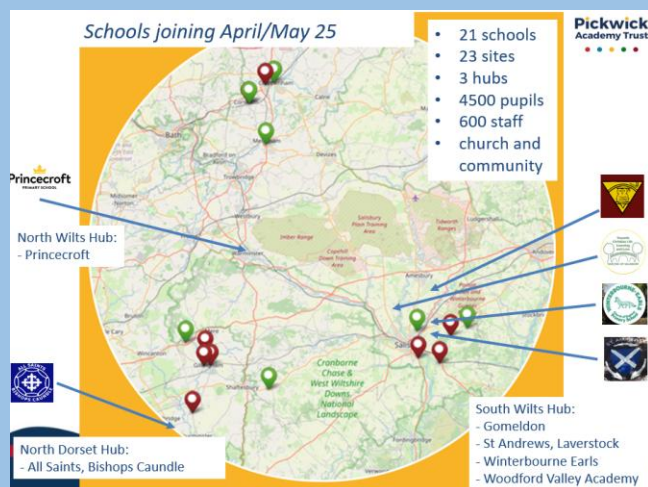
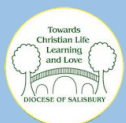
It has been my pleasure to spend time with the children and staff in these schools, and will be sharing in assemblies how we all learn and work collaboratively, through the theme of community.

Joined on 1 April 2025:

- All Saints CE Primary, Bishops Caundle, North Dorset
- Gomeldon Primary School, Salisbury
- Woodford Valley CE Primary Academy, Salisbury

Hopefully joining on 1 May 2025:

- Princecroft Primary School, Warminster
- St Andrews CE Primary School, Laverstock, Salisbury
- Winterbourne Earls CE Primary School, Salisbury



SDBE Partnership

We were delighted to receive an 'Accredited Partner' status certificate from the Salisbury Diocesan Board of Education (SDBE) this week.

It was awarded in recognition of our Trust's 'Programme for Church Schools Flourishing' leaders developing and embedding practices and strategies that enrich and deepen church school flourishing, in our church schools.

Huge thanks to Director of Education, Rebecca Bone, and Trustee, Rachel Alderman, for leading this work so strongly.



Parent Webinars

[Resilience for Learning and Well-being](#)

[Helping your child with anxiety](#)

[Digital Parenting](#)

North Wiltshire Hub



South Wiltshire Hub



North Dorset Hub



Pickwick Academy Trust, Pickwick Offices, Pound Pill, Corsham, Wiltshire, SN13 9YW

www.pickwickacademytrust.co.uk; @PickwickTrust; 01249 717090; admin@pickwickacademytrust.co.uk