

8<sup>th</sup> January 2026

## NOTICES & REMINDERS

Welcome back and I hope everyone had a lovely break. A thank you from all staff for our kind Christmas gifts too.

- A reminder for named wellies to be kept at school so pupils can enjoy the field in all weather.
- Please continue to book lunches via Arbor. There have been a few that were missing from the list this week.
- Rosie from Drama Club Salisbury is holding a workshop here on the 13<sup>th</sup> February, which is an Inset Day. Please see the poster within Pitton News to book.
- If you have a child who will be starting school in Sept 2026, please do not forget to apply before the 15<sup>th</sup> January.
- This term's value is Perseverance

## PERSEVERANCE



*Perseverance means continuing effort and determination towards a goal despite difficulties, failure, or opposition.*

Best wishes,

Pitton Staff Team

## BIRTHDAYS

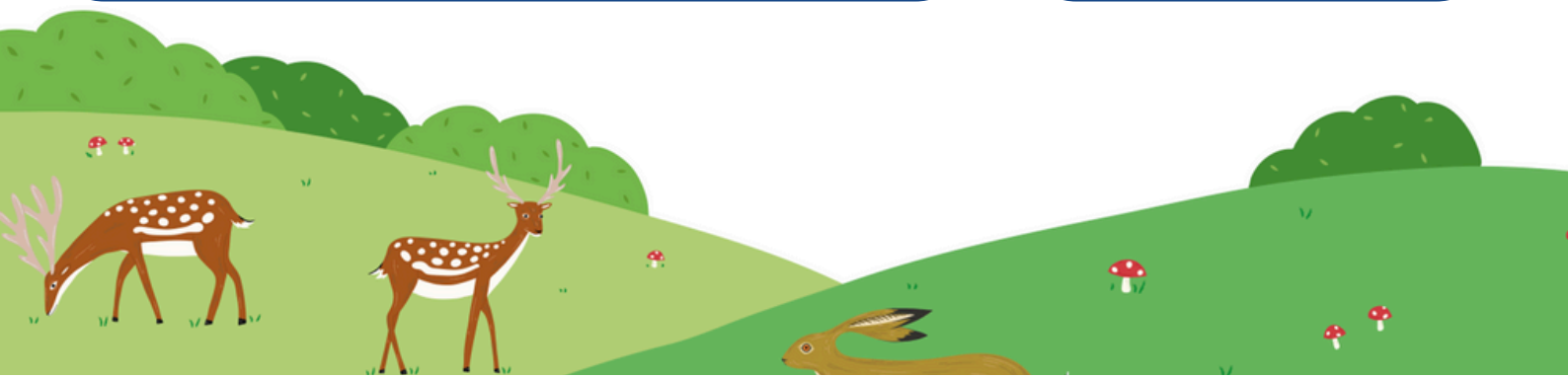
Cassius

Remember you can wear your own clothes to school

## DATES FOR THE DIARY

### TERMS 3 & 4

- 09.01.26 Open Morning 9-11am
- 19.01.26 World Religions Day
- 23.01.26 AIM High
- 27.01.26 FOPS meeting @ Silver Plough 8pm
- 13.02.26 INSET day
- 27.02.26 Beck-Fahrner Syndrome Day
- 06.03.26 World Book Day
- 07.03.26 Whole School book and drama workshop
- 18.03.26 House Martin Assembly
- 17.03.26 Dodgeball Tournament
- 26.03.26 Orienteering Competition
- 27.03.26 End of term 4



Friday, February 13th!

# HOLIDAY CLUB!

9AM - 3PM | £45 PER CHILD



- Outdoor games ★ Drama & fun ★
- ♥ Crafting • Roleplay themed games

To book, contact **ROSIE**

☎ **07841 394485** or

♥ [www.dramaclubsalisbury.co.uk](http://www.dramaclubsalisbury.co.uk)

**Pitton Primary School**

Childcare vouchers or tax-free  
childcare vouchers accepted

✓ Ofsted Registered ✓

Ofsted  
Registered