

## NOTICES & REMINDERS

- The consent for Bikeability for Y6 is now on Arbor. Bikeability focuses on learning to stay safe while on your bike. We are just confirming the locations for both days (usually Pitton day 1 & Greentrees day 2) so will let parents know ASAP. Apologies for the incorrect information on Dojo.
- The music concert for those who participate in music lessons or LAMDA will be held at school on the 19<sup>th</sup> June at 2:15pm. Parents of those performing are welcome to attend, please do check with your child or music teacher to confirm if they are performing, some pupils may not feel ready to perform this year.
- Reception, 1 & 2 will be visiting New Forest Wildlife Park on the 3<sup>rd</sup> July as part of their enquiry, please complete consent and payment via Arbor.
- Year 3 & 4 will be visiting Butser Farm on the 26<sup>th</sup> June as part of their enquiry, please complete consent and payment via Arbor.
- We are taking donations for toys and games for a stall at Pitton Carnival, please drop these in at the office.
- Sara Bossom has invited parents and pupils to attend a short Family Service with herself and Sarah this Sunday at 11am at St Peter's Church in Pitton.

Best wishes,

Pitton Staff Team

## BIRTHDAYS

Mia

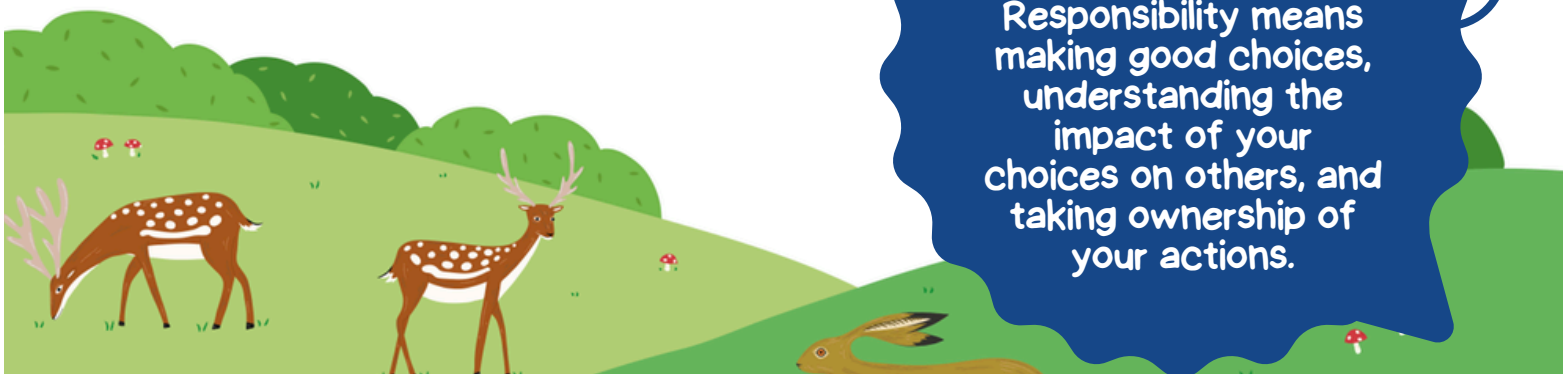
## DATES FOR THE DIARY

### TERMS 5 & 6

- 19.06.26 Music Concert 2:15pm
- 19.06.26 Father's Day bake sale
- 23.06.26 Move Up Day
- 26.06.26 Y3 & 4 Butser Farm
- 30.06.26 Sports Day
- 03.07.26 YR-2 Wildlife Park
- 09.07.26 Production
- 11.07.26 Pitch Up Pitton
- 13 & 14.07.26 Bikeability
- 15-17.07.26 Tile Barn
- 21.07.26 Leavers Service at St Peters
- 22.07.26 INSET day

This term's value is  
Responsibility

Responsibility means  
making good choices,  
understanding the  
impact of your  
choices on others, and  
taking ownership of  
your actions.





# Pitton C.E Primary School

**16th June 2026 2-3pm**  
**19th June 2026 9:30-11am**  
Summer Open Days for Reception 2027

We also have limited availability for in-year transfers.

Come and explore our vibrant classrooms, meet our dedicated staff, and see what makes our school a wonderful place to learn and grow.

Our mixed year group classes offer numerous benefits, fostering social, emotional and academic growth in our students. Beyond our spacious classrooms and hall, our extensive grounds offer an ideal place for your child to thrive.



Please contact the office to book.  
[admin@pitton.wilts.sch.uk](mailto:admin@pitton.wilts.sch.uk) 01722 712322





# Farley Fete

## SATURDAY 27 JUNE

**Join us for our traditional village fete with all this...**

- Vintage tractors
- Bar
- BBQ (and veggie BBQ)
- Tea and cakes
- Fabulous raffle prizes
- Circus skills workshop
- Local artisan craft stalls
- Fox collage competition
- Plants and books
- Face painting

and lots of other games and attractions



**FARLEY FETE**

**Saturday 27 June 2026, 1pm - 4.30pm**

**FREE ENTRY**

**Coronation Playing Field, Church Road, Farley**



**FRIENDS OF PITTON SCHOOL PRESENT**

# **HOME PRODUCE AND BAKE SALE**

**FRIDAY 19<sup>TH</sup> JUNE  
IN THE PLAYGROUND**

**ENJOY A VARIETY OF BAKED GOODS AND  
HOMEMADE PRODUCE. BUY A TREAT READY FOR  
DADS/GRANDADS ON FATHERS DAY.**

**ALL FUNDS RAISED WILL GO TO FRIENDS OF PITTON  
SCHOOL**

**PAYMENT CAN BE BY CASH OR CARD**

**PLEASE BRING ANY GOODS FOR THE SALE TO THE  
SCHOOL ON FRIDAY 19<sup>TH</sup> MORNING.**

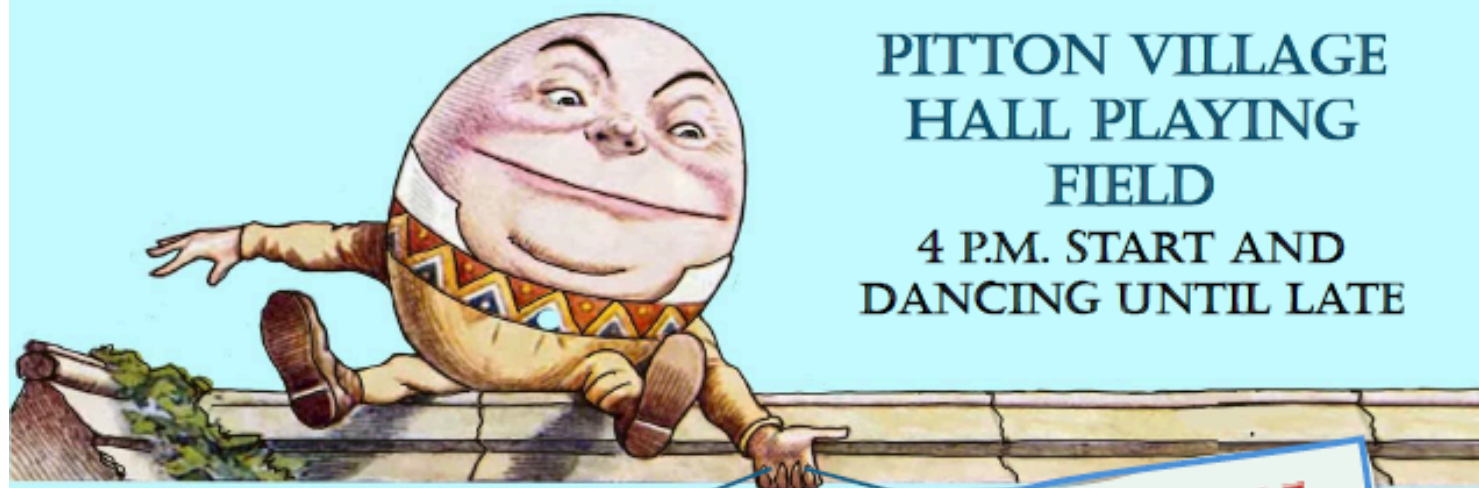


**CHARITY NUMBER 1055557  
FRIENDS OF PITTON SCHOOL**

WHITEWAY, PITTON, SALISBURY, SP5 10F

# PITTON CARNIVAL

## 4<sup>TH</sup> JULY 2026



PITTON VILLAGE  
HALL PLAYING  
FIELD

4 P.M. START AND  
DANCING UNTIL LATE

**FANCY DRESS PARADE FROM 3.45**  
**STALLS AND SIDESHOWS FROM 4 - 6 P.M.**  
**LINE DANCING** Phat Larry's Big Roll Band  
**NOLE'S PIZZA** & **PAUL'S BURGER VAN**  
**BAR PIMMS** **AFTERNOON TEAS**  
**Tombola** **AUCTION OF PROMISES**  
**Kidz Love Fit** **Guess the Movie**  
**SCARECROW COMPETITION**

**This year's theme is NURSERY RHYMES**

# PITTON CARNIVAL 2026

DATES FOR THE DIARY - POP THIS PAGE ON YOUR FRIDGE AS A REMINDER!

ALL FUNDS RAISED GO TOWARDS THE MAINTENANCE AND  
SUPPORT OF THE VILLAGE HALL

## **Saturday 20<sup>th</sup> June**

Last day for putting your scarecrow on display!

## **Sunday 21<sup>st</sup> June - Friday 3<sup>rd</sup> July**

Get your judging sheets, visit all the scarecrows and choose your  
favourite - be sure to return your score sheets to Carol Metson!

**Sunday 28<sup>th</sup> June**                      **Petanque Melee**                      **10.30am**  
Pitton Village Hall Terrain

**Saturday 4<sup>th</sup> July**                      **Carnival Fete Day!!**  
Pitton Village Hall Field    Fancy Dress 3.15pm    Grand Opening 4pm

And to round us off:

**Monday 6<sup>th</sup> July**                      **Guides Games Evening**                      **6.45pm**  
Pitton Village Hall

\*\*\*\*\*

Prices are £1per head for the afternoon (4-6pm), £5 for  
afternoon and evening (4-11pm), under 18s free.

REMEMBER: The wrist band is your ticket and must be worn!

**READ ON FOR FULL DETAILS!**

**PITTON CARNIVAL 2026**  
**Sunday 28<sup>th</sup> June - Saturday 4<sup>th</sup> July**

The theme this year is: **NURSERY RHYMES!**

**SCARECROW COMPETITION**

Hopefully your scarecrow ideas are blossoming and your scarecrow will appear in front of your house for all to admire! To enter is easy:

1. Email Carol ([carolanne2@icloud.com](mailto:carolanne2@icloud.com)) on or before **19<sup>th</sup> June** to get your Scarecrow number. Please include your name and address.
2. Make your Scarecrow and put it on display by **20<sup>th</sup> June**. Make sure the number can be clearly seen!

From the **21<sup>st</sup> June**, all villagers can take part in judging the Scarecrows - even if you haven't made one.

You can collect a voting slip from Pitton Stores or the Silver Plough. If you prefer, contact Carol ([carolanne2@icloud.com](mailto:carolanne2@icloud.com)) and she will email a copy to you. Then enjoy visiting all the Scarecrows and awarding them points out of 10 - for a) Best Scarecrow and b) the One That Made Me Smile. Return your voting slip to Carol, 2 Rose Cottages, White Hill or by email by **3<sup>rd</sup> July** at the latest.

Winners will be announced at the Carnival Fete on Saturday 4<sup>th</sup> July and prizes awarded.

**SUNDAY 28<sup>TH</sup> JUNE:      PETANQUE MELEE**

Pitton Village Hall Terrain

10.30 am

No need to book - just turn up! Boules will be provided. Contact Sarah at [sarahnightingale196@btinternet.com](mailto:sarahnightingale196@btinternet.com) if you need any further details.

**MONDAY 6<sup>th</sup> July:      GUIDES GAMES EVENING**

Pitton Village Hall

6.45pm

The Guides are again hosting a Games Evening to which all are warmly invited. Cost is £3 per head. Tea/Coffee and biscuits will be served in the interval. Please come and support - it's good fun!

# SATURDAY 4<sup>TH</sup> JULY: CARNIVAL FETE DAY!!

**NB:** The Carnival Team respectfully request **NO** bicycles on the Carnival field please.

## Fancy Dress Judging and Parade

Assemble in the Tennis Court at 3.15pm for the judging at 3.30pm. Everyone will then parade around the Village Hall Field for the presentation of prizes at 3.45 pm and the **Grand Opening** at 4 pm. Categories for Fancy Dress are: Pre School Age, Primary School Age, Adults, Group entry (two or more).

## FROM 4 - 6:

All the usual stalls and sideshows, some familiar, some new. Afternoon Tea, Pimm's, Beer Tent, a Re-fuel Stop for the U18s, ice cream and a choice of food available to buy from Nole's Pizza and Paul's Burger Van.

## FROM 6.15 pm:

Kidz Love Fit will entertain the little ones followed by Line Dancing at 7.30, until the day is rounded off with music from the fabulous **Phat Larry's Big Roll Band!**

**SO** - What can **YOU** do to help?

**CAKES** for the Cake Stall - These can be left at the Hall on Friday afternoon (3<sup>rd</sup> July) or the morning of Carnival Day.

**PROMISES** for the Silent Auction to: Jane Emden ([candjemden@hotmail.co.uk](mailto:candjemden@hotmail.co.uk))

**DONATIONS** (which will be collected during the week leading up to Carnival:

**BOTTLES** for the Bottle Stall

**GOOD UNWANTED GIFTS** (e.g. new toiletries, jewellery etc.) (and bags!) for the Lucky Bag stall.

For the **PLANTS AND CRAFT STALL** (including pickles, jams, crafted items)

**All donations** can also be delivered to Jane Emden at Yafflewood, Beeches Close (no later than Friday evening 3<sup>rd</sup> July please!).

Marquees will be set up Friday afternoon and the field itself on the morning of Saturday 4<sup>th</sup> July from 10 am.

Then there is the **CLEARING UP!!** - Sunday 5<sup>th</sup>, from 9.30 am

**ALL HELP MOST WELCOME!**